





This immaculate, five-bedroom detached family home is situated on the highly sought-after Chase Meadow development with excellent transport links and good schools. The well-proportioned accommodation, in brief, affords the Reception Hall, cloakroom, dining room, living room, good-sized breakfast kitchen, utility room, master and guest bedroom with en-suite showers, and principal bathroom. ample parking, an integral double garage, and a generous-size established rear garden. Energy rating C

Location

Chase Meadow has a good selection of local amenities, including schooling for all ages, Doctor's Surgery, a

Pharmacy, a convenience store, a community centre, two takeaways & a public house/eatery.

Warwick town centre has various shopping and recreational facilities and the world-famous Warwick Castle. There are a variety of state and private schools to suit all requirements, including Warwick Preparatory and Boys School and The King's High School, all of which are within close proximity. Commuting is easy, with regular trains from Warwick Station, Warwick Parkway & Leamington Spa to Birmingham & London Marylebone. The motorway network is easily accessible via junction 15 of the M40 giving access to Birmingham, the North, London, and the South.

Approach

Through a double glazed entrance door into:

Reception Hall

Radiator, tiled floor, double doors to Dining Room, staircase rising to First Floor Landing. Further doors to:

Cloakroom

Low flush WC, pedestal wash hand basin with tiled splashbacks, tiled floor, radiator and extractor fan.

Dining Room

10'4" x 9'11" (3.16m x 3.03m)

Wood effect floor, radiator and a double-glazed window to the front aspect.



Living Room

15'11" x 12'7" (4.86m x 3.86m)

Two radiators, and double-glazed French doors with side screens provide access to the rear garden.

Breakfast Kitchen

18'8" x 12'7" narrowing to 7'8" (5.69m x 3.85m narrowing to 2.36m)

Having a comprehensive range of matching base and eye level units, complementary worktops and upturns, inset single drainer sink unit with mixer tap and rinse bowl. AEG five-ring gas hob with stainless steel splashback, extractor unit over, and Hotpoint electric oven with storage

cupboards above and below. AEG dishwasher, integrated fridge/freezer with adjacent shelved tall storage unit. Tiled floor, radiator, double-glazed window to the rear, double-glazed French doors to the rear, and garden. Door to:

Utility Room

Worktop with inset single drainer sink unit with mixer tap, matching base and eye level units. Space and plumbing for washing machine and tumble dryer, radiator, tiled floor and a double glazed casement door to side aspect and garden.

First Floor Landing

Radiator, built-in Airing Cupboard housing the hot water cylinder, access to roof space. Doors to:

Bedroom One

12'7" x 12'5" (3.85m x 3.81m)

Built in twin mirror fronted sliding door wardrobes, radiator, two double glazed windows to front aspect, wall mounted Nest control. Door to:

En-Suite Shower

White suite comprising WC, pedestal wash hand basin, wide tiled shower enclosure with shower system, Roman glazed folding shower screen. Chrome heated towel rail, extractor fan, double glazed window.



Bedroom Two

12'5" x 11'6" (3.80m x 3.52m)

Radiator and two double-glazed windows to the front aspect. Door to:

En-Suite Shower

White suite comprising WC, pedestal wash hand basin with tiled splashbacks. Tiled shower enclosure with shower system and glazed folding shower door. chrome heated towel rail and a double-glazed window.

Bedroom Three

10'11" x 8'9" (3.35m x 2.68m)

With part mirrored sliding door wardrobes with vanity area

and display shelving over, radiator and a double-glazed window to the rear aspect.

Bedroom Four

11'1" x 8'9" (3.40m x 2.68m)

Radiator and a double-glazed window to the rear aspect.

Bedroom Five

9'10" x 9'1" (3.00m x 2.79m)

Radiator, eye-level display/storage units and a double-glazed window to the rear aspect.

Family Bathroom

White suite comprising bath with mixer tap and shower



system over with fixed head shower and additional shower attachment, glazed shower screen. Pedestal wash hand basin, WC, chrome heated towel rail and a double-glazed window.

Outside

Which is landscaped and provides excellent off-road parking with access to the integral double garage. There is also an electric charging point.

Garage

Twin up and over doors, power and light, and accommodate the wall-mounted Ideal gas-fired boiler.





Rear Garden

Outside tap, well-tended lawned gardens, timber garden shed, stocked borders and a pergola with climbing plants. The gardens are enclosed on all sides with gated side pedestrian access.

Tenure

The property is understood to be freehold, although we have not inspected the relevant documentation to confirm this.

Services

All main services are understood to be connected. NB

We have not tested the heating, domestic hot water system, kitchen appliances, or other services, and whilst believing them to be in satisfactory working order, and cannot give warranties in these respects. Interested parties are invited to make their own inquiries.

Council Tax

The property is in Council Tax Band "G" - Warwick District Council

Postcode

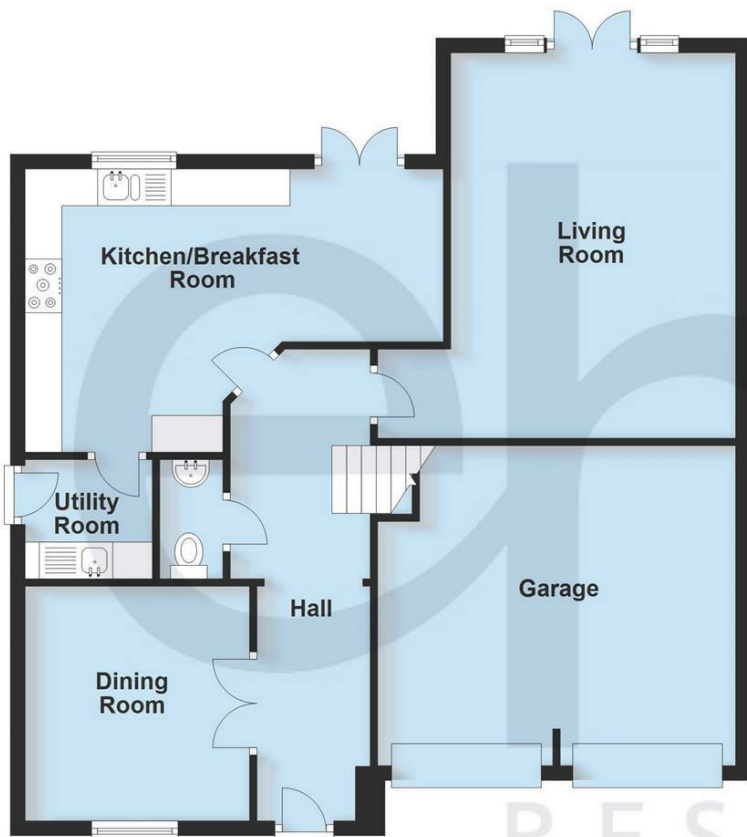
CV34 6XT



- Residential Estate Agents •
- Lettings and Property Managers •
- Land and New Homes Agents •

Ground Floor

Approx. 88.0 sq. metres (947.4 sq. feet)



First Floor

Approx. 82.7 sq. metres (890.1 sq. feet)



Total area: approx. 170.7 sq. metres (1837.5 sq. feet)

This plan is for illustration purposes only and should not be relied upon as a statement of fact

Warwick Office
17-19 Jury Street
Warwick
CV34 4EL

☎ 01926 499540 🌐 ehbresidential.com

Energy Efficiency Rating		
	Current	Potential
Very energy efficient - lower running costs		
(92 plus) A		
(81-91) B		85
(69-80) C	77	
(55-68) D		
(39-54) E		
(21-38) F		
(1-20) G		
Not energy efficient - higher running costs		
England & Wales		EU Directive 2002/91/EC

Also at: Leamington Spa, Somerset House,
Clarendon Place, Royal Leamington Spa CV32 5QN

IMPORTANT NOTICE ehB Residential for themselves and for the Vendors of this property, whose agents they are, give notice that:- 1. The particulars are intended to give a fair and substantially correct overall description for the guidance of intending purchasers and do not constitute part of an offer or contract. Prospective purchasers and lessees ought to seek their own professional advice. 2. All descriptions, dimensions, areas, reference to condition and necessary permissions for use and occupation and other details are given in good faith, and are believed to be correct, but any intending purchasers should not rely on them as statements or representations of fact, but must satisfy themselves by inspection or otherwise as to the correctness of each of them. 3. No person in the employment of ehB Residential has any authority to make or give any representations or warranty whatever in relation to this property on behalf of ehB Residential, nor enter into any contract on behalf of the Vendor. 4. No responsibility can be accepted for any expenses incurred by intending purchasers in inspecting properties which have been sold, let or withdrawn. Measurement and other information. All measurements are approximate. While we endeavour to make our sales particulars accurate and reliable, if there is any point which is of particular importance to you, please contact this office and we will be pleased to check the information for you, particularly if contemplating travelling some distance to view the properties. 5. The agents will require identity documentation and evidence of address before entering into any transaction under money laundering regulations 2007.